

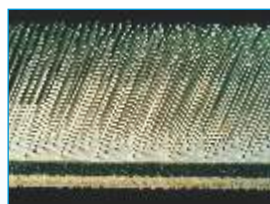
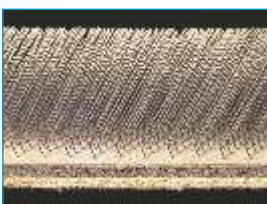


The Indian Card Clothing Co. Ltd.



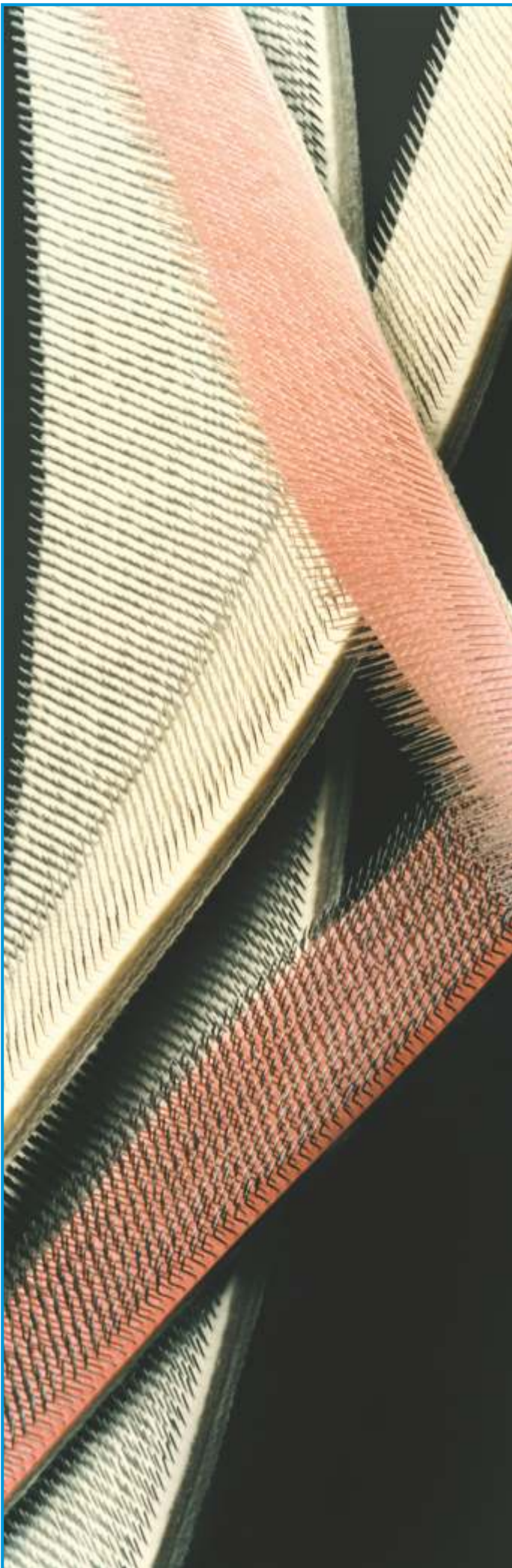
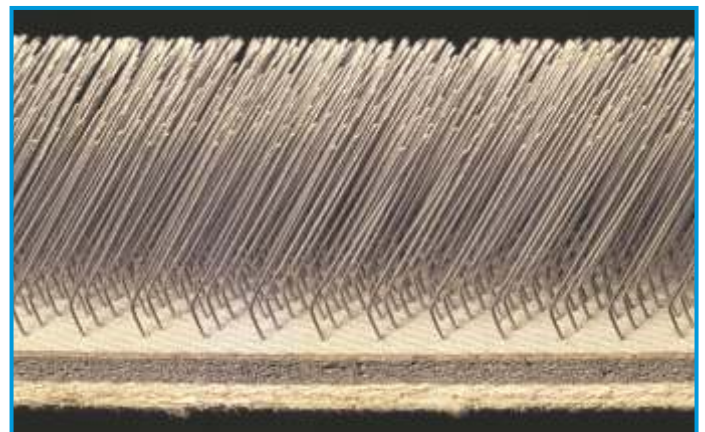
**CARDING REVOLVES
AROUND US!**

WOOLLEN FILLETS



RECOMMENDED MOUNTING TENSIONS FOR FLEXIBLE CARD CLOTHING

FOUNDATION		Kg. Per mm of actual fillet width
FILES		
Thick or thin felt	6 ply	3.2
	7 ply	3.4
	8 ply	3.6
	9 ply	4.0
	10 ply	4.5
Cushion felt	6 ply	3.4
	7 ply	3.6
	8 ply	3.9
	9 ply	4.3
	10 ply	4.5
Vulcanised India Rubber Cloth	4 ply	2.3
	5 ply	2.5
	6 ply	2.7
	7 ply	2.9
RAISING FILLETS	3 ply rubber cloth	0.6
	4 ply rubber cloth	0.65
	3 & 4 ply felt	0.7
	Brush fillets	1.7



SPECIFICATIONS

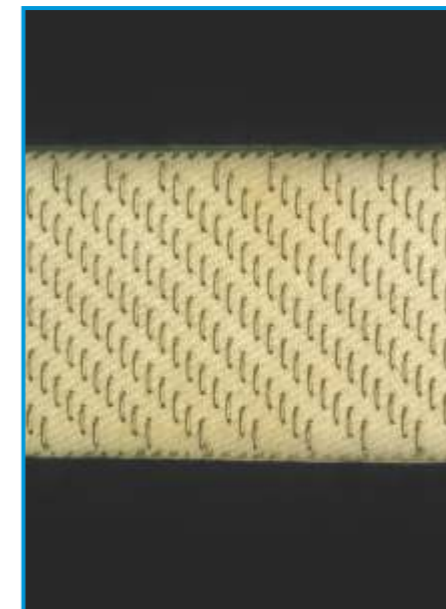
FIBRE TYPE	SHODDY							CARPET			BARRACK		COTTON WASTE			ASBESTOS			WORSTED	ACRYLIC RAGS	SILK WASTE		
YARN COUNTS	4 Nm to 8 Nm			4 Nm to 16 Nm			Up to 4 Nm	40 ^s to 60 ^s					1.5 ^s to 2 ^s						Acrylic/ Cashmilon				
NO. OF PARTS	2 CYLINDERS		3 CYLINDERS		3 CYLS	4 CYLS	2 CYLS	2 CYLINDERS		2 CYLINDERS		1 CYL	2 CYLINDERS		1 CYL	1 CYL	2 CYLS	1 CYL	3 CYLS	2 CYLS	3 CYLS		
M/C TYPE	INDIAN	IMPORTED	INDIAN	IMPORTED	IMPORTED	IMPORTED	INDIAN	INDIAN	IMPORTED	INDIAN	IMPORTED	INDIAN	INDIAN	IMPORTED									

BREAST PART																					
Cylinder	MET	MET	MET	MET	MET	MET	MET	MET	MET	MET	MET	MET	MET	MET	MET	MET	19/23	MET	MET	MET	MET
Worker	MET	MET	MET	MET	MET	MET	MET	MET	MET	MET	MET	MET	MET	MET	MET	MET	19/23	MET	MET	MET	MET
Stripper	MET	MET	MET	MET	MET	MET	MET	MET	MET	MET	MET	MET	MET	MET	MET	MET	19/23	MET	MET	MET	MET
Feed Roller	MET	MET	MET	MET	MET	MET	MET	MET	MET	MET	MET	MET	MET	MET	MET	-	MET	MET	MET	MET	MET
Lickerin	MET	MET	MET	MET	MET	MET	MET	MET	MET	MET	MET	MET	MET	MET	MET	-	MET	MET	MET	MET	MET

1ST PART																					
Transfer	21/25	21/25	21/25	21/25	22/26	22/26	20/24	19/23	19/23	19/23	19/23	22/26	20/24	21/25	19/23	20/24	19/23	28 ^s	20/24	30 ^s	30 ^s
Cylinder	22/26	22/26	22/26	22/26	23/27	23/27	22/26	20/24	20/24	19/23	19/23	24/28	21/25	22/26	21/25	21/25	21/25	29 ^s	21/25	31 ^s	31 ^s
Doffer	23/27	23/27	23/27	23/27	24/28	24/28	23/27	21/25	21/25	20/24	20/24	25/29	22/26	23/27	22/26	22/26	22/26	30 ^s	22/26	32 ^s	32 ^s
Worker	22/26	22/26	22/26	22/26	24/28	24/28	23/27	21/25	21/25	20/24	20/24	25/29	22/26	23/27	21/25	21/25	21/25	30 ^s	21/25	32 ^s	32 ^s
Worker	23/27	23/27	23/27	23/27	24/28	24/28	23/27	21/25	21/25	20/24	20/24	25/29	22/26	23/27	22/26	22/26	22/26	30 ^s	22/26	32 ^s	32 ^s
Stripper	21/25	21/25	21/25	21/25	23/27	23/27	22/26	20/24	20/24	19/23	19/23	24/28	21/25	22/26	21/25	21/25	21/25	29 ^s	20/24	31 ^s	31 ^s
Stripper	22/26	22/26	22/26	22/26	23/27	23/27	22/26	20/24	20/24	19/23	19/23	24/28	21/25	22/26	22/26	22/26	22/26	29 ^s	20/24	31 ^s	31 ^s
Fancy	27 ^s	27 ^s	27 ^s	27 ^s	28 ^s	28 ^s	27 ^s	26 ^s	26 ^s	26 ^s	26 ^s	29 ^s	26 ^s	27 ^s	26	26 ^s	26 ^s	30 ^s	26 ^s	31 ^s	31 ^s
Doffer Clr	28 ^s	28 ^s	28 ^s	28 ^s	29 ^s	29 ^s	28 ^s	26 ^s	26 ^s	26 ^s	26 ^s	29 ^s	27 ^s	28 ^s	27	27 ^s	27 ^s	30 ^s	27 ^s	31 ^s	31 ^s

2ND PART																					
Cylinder	26/30	27/31	25/29	25/29	26/30	25/29	25/29	24/28	25/29	24/28	25/29		25/29	26/30			23/27		25/29	32 ^s	32 ^s
Doffer	27/31	28/32	26/30	26/30	27/31	26/30	27/31	25/29	26/30	25/29	26/30		26/30	27/31			24/28		26/30	33 ^s	33 ^s
Worker	27/31	28/32	26/30	26/30	27/31	26/30	26/30	25/29	26/30	25/29	26/30		26/30	27/31			24/28		26/30	33 ^s	33 ^s
Stripper	26/30	27/31	25/29	25/29	26/30	25/29	25/29	24/28	25/29	24/28	25/29		25/29	26/30			23/27		25/29	32 ^s	32 ^s
Fancy	31 ^s	32 ^s	30 ^s	30 ^s	31 ^s	30 ^s	30 ^s	29 ^s	30 ^s	29 ^s	30 ^s		30 ^s	31 ^s			28 ^s		30 ^s	32 ^s	32 ^s
Doffer Clr	31 ^s	32 ^s	31 ^s	31 ^s	31 ^s	31 ^s	31 ^s	29 ^s	30 ^s	29 ^s	30 ^s		30 ^s	31 ^s			28 ^s		31 ^s	33 ^s	33 ^s

3RD PART						
Cylinder			31 ^s	32 ^s	33 ^s	31 ^s
Doffer			32 ^s	33 ^s	34 ^s	32 ^s
Worker			32 ^s	33 ^s	34 ^s	32 ^s
Stripper			31 ^s	32 ^s	33 ^s	31 ^s
Fancy			31 ^s	32 ^s	33 ^s	31 ^s
Doffer Clr			31 ^s	33 ^s	33 ^s	31 ^s






28/32		33 ^s
29/33		34 ^s
29/33		34 ^s
28/32		33 ^s
32 ^s		33 ^s
33 ^s		33 ^s

4TH PART						
Cylinder						33 ^s
Doffer						34 ^s
Worker						34 ^s
Stripper						33 ^s
Fancy						33 ^s
Doffer Clr						33 ^s



WIRE DIMENSIONS FOR FLEXIBLES

WIRE NUMBER	DIMENSIONS (mm)	PPSI
ROUND WIRE 		
20	0.9144	64
22	0.7112	120
24	0.5842	150
26	0.4826	220
27	0.4318	240
28	0.4064	265
29	0.3810	290
30	0.3556	320
31	0.3302	360
32	0.3048	400
33	0.2794	450
34	0.2540	500
35	0.2286	550
36	0.2030	600
BI-CONVEX WIRE  a x b		
18/22	1.2192 x 0.7112	80
19/23	1.0160 x 0.6350	90
20/24	0.9144 x 0.5842	110
21/25	0.8128 x 0.5334	130
22/26	0.7112 x 0.4826	160
23/27	0.6350 x 0.4318	190
24/28	0.5842 x 0.4064	220
25/29	0.5334 x 0.3810	255
26/30	0.4826 x 0.3556	290
27/31	0.4318 x 0.3302	320
28/32	0.4064 x 0.3048	360
29/33	0.3810 x 0.2794	400
31/34	0.3302 x 0.2540	440
FLAT WIRE 		
22/34	0.7112 x 0.2540	-
21 1/2/34	0.7620 x 0.2540	-

The Indian Card Clothing Co. Ltd.

HEAD OFFICE & FACTORY

Mumbai-Pune Road, Pimpri, Pune - 411018, INDIA

Tel: +91 20 39858200 (Operator)

Direct: (20) 39858235 (Domestic)

Direct: +91 20 39858248 (Export)

Fax: +91 20 39858300

E-mail: sales@cardindia.com (Domestic)

export@cardindia.com (Export)

Website: www.cardindia.com

COIMBATORE

857, Avanashi Road, Peelamedu,

Coimbatore-641 004

Tel: (422) 2561458, 2561459, 43514558

Fax: (422) 256 2384 Mob: 09345178828, 09489575067

E-mail: iccbe@cardindia.com

AHMEDABAD

1004, 10th Floor, Sakar 3,

Near Income Tax Circle

Ahmedabad - 380 014

Tel: (79) 32911656

Fax: (79) 65241656 Mob: 09327024068

E-mail: iccahm@cardindia.com

GUNTUR

Survey No. 398/A,

Perecherla Road, Nalla Padu,

Guntur - 522 005

Tel: (0863) 2596625, 3206632

Mob: 9391043619

E-mail: iccgtr@cardindia.com

LUDHIANA

202/203 Alfa Towers,

Broun Road, Ludhiana-141 008

Tel: (161) 272 0898 / 323 7603

Fax: (161) 5031147

Mob: 09316912628

E-mail: iccldh@cardindia.co

HIMACHAL PRADESH FACTORY

Manjholi, Nalagarh Ropar Road,

Tehsil-Nalagarh (HP) -174 101

Tel: (1795) 393429/ 393432/ 393400

Fax: (1795) 393440

Email: icchp@cardindia.com

NEW DELHI

511 Kirti Mahal 19, Rajendra Place

New Delhi-110 008

Tel: (11) 257 54642, 25755619, 32457737

Fax: (11) 257 55618 Mob: 09312233802

E-mail: iccdel@cardindia.com

MADURAI

Alagamma Garden, 19 Sengolnagar,

Vilangudi, Madurai 625 018

Tel: (452) 2668071/ 2668330/ 32511676

Mob : 09344105864

Fax: (452) 2668071

E-mail: iccmdu@cardindia.com

MUMBAI

ICC CHAMBERS

Near MTNL Office, Saki Vihar Road,

Powai, Mumbai - 400 072

Tel: (22) 28470125

Fax: (22) 28470108

Mob: 9322593037

E-mail: iccbom@cardindia.com

Due to continuous product development, we reserve the right to change specifications of products mentioned in our catalogue without notice. Photographs and illustrations are of informative value only.

Effective Date: 3rd Dec. 2016. This issue supersedes all earlier issues.



The Indian Card Clothing Co. Ltd.